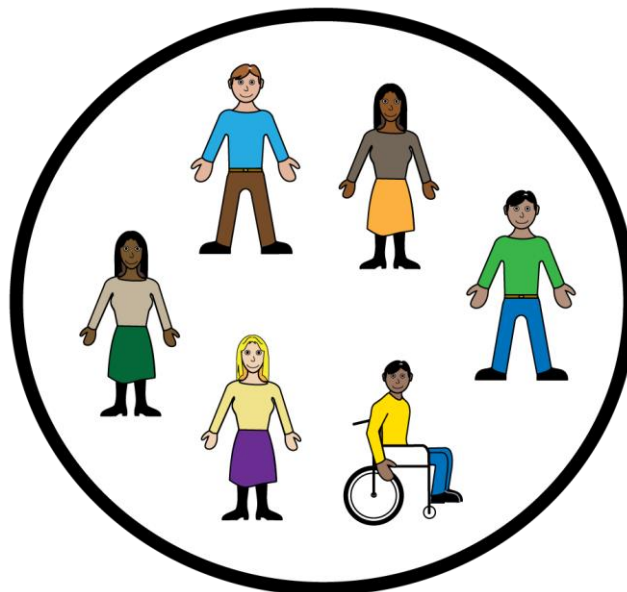


# The Intensive Support Team – North Yorkshire, York and Selby

Easy read information about this team



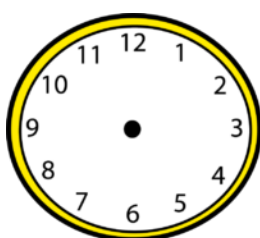
## Where



The team are based at York.

They will come and see you at your home  
or anywhere else that you would like to  
choose.

## When



The team work from 8am until 8pm.

7 days a week.

We will make an appointment with you a  
time that suits you.

## Who

### nurses



We provide an alternative to in-patient care, for people with a learning disability who are experiencing (but not exclusively) mental health difficulties or behavioural challenges.

The team have a team manager, nurses, care assistants, an occupational therapist and a secretary.

When we visit you, we will introduce ourselves to you.

## What



The team are here to help you when you need extra support.

## Contact

### contact



Email

[teww.ldintensivesupportteamnyys@nhs.net](mailto:teww.ldintensivesupportteamnyys@nhs.net)

## If you are unhappy about our services...



Please tell a member of staff.



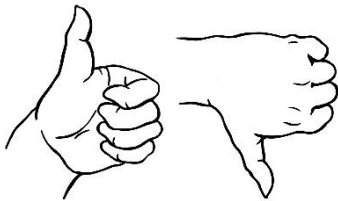
**Freephone** 0800 052 0219 or



**Email** [tewv.pals@nhs.net](mailto:tewv.pals@nhs.net).

## Feedback

We'd like to know if you thought this information was



- good or bad
- if anything was missing you wanted to know
- if there was anything you didn't understand.

Let a member of your care team know.

## Find this information

**Staff:** Trustwide shared drive > Patient and Carer Information > NYY&S > LD

**Patients and carers:** Go to our website [www.tewv.nhs.uk](http://www.tewv.nhs.uk) and search for the Intensive Support Team

All images/resources copyright © LYPFT

L1204, V2, 01/05/2024 (archive 29/04/2027)